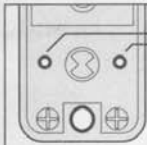


3 LATCH SUPPORT POST



- Fit the Latch Support Post in the back of the lockcase, in hole A for a Right Hand door, or B for a Left Hand door.

4 HOLD-OPEN BACKPLATE

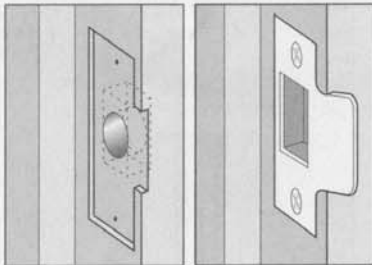
- The backplate of a hold-open lock is fitted with a blue screw to stop the handle moving in the wrong direction. This should be in the Left Hand hole for a Right Hand door, or the Right Hand hole for a Left Hand door.

5 POSITIONING THE SPINDLE

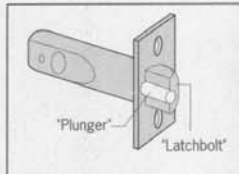


- The spring-loaded spindle will fit doors between 35mm and 65mm thick. For doors less than 50mm thick break off the 15mm section at the end of the spindle. For doors more than 65mm thick, ring the Helpline for advice. The spring keeps the spindle firmly engaged in the outside handle when the lock is assembled on the door.
- Insert the spindle, with the spring on the code side, through the 13mm hole in the door, and make sure that it engages the latch correctly for the hand of the door (see inset diagram).

7 FITTING THE STRIKE PLATE

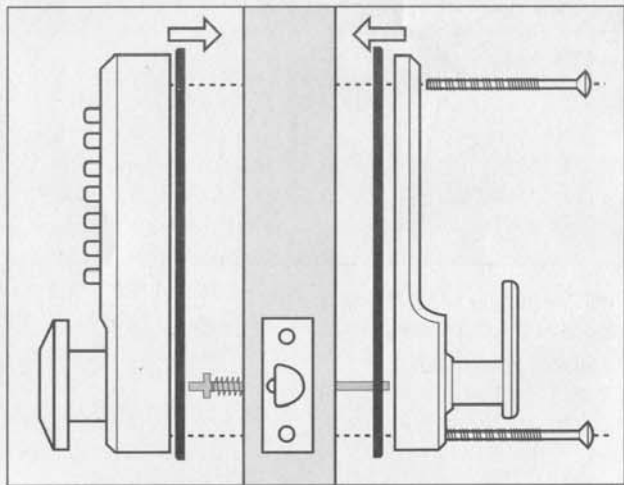


NB The plunger beside the latchbolt deadlocks the latchbolt and protects it against manipulation. IT MUST NOT enter the strike plate aperture when the door is closed.



- Ensure that there are no obstructions to prevent the door closing properly into its frame, such as litter trapped in the hinge side.
- Position the strike plate on the door frame so that it lines up with the flat of the latchbolt, **NOT THE PLUNGER**.
- Draw around the aperture of the strike plate. Chisel out the aperture 15mm deep to receive the latchbolt. Fix the strike plate to the surface of the frame with one screw only. Close the door and ensure that the latch bolt enters the aperture easily, and is held without too much 'play'. When satisfied, draw around the final position of the strike plate, remove it and cut a 1mm rebate to enable it to fit flush. Re-fix the strike plate with both screws.

6 FIXING THE LOCK



- Cut the fixing bolts to suit the door thickness, allowing at least one threaded section to screw into the lockcase.
- Hold the lock case and the backplate, with the seals, onto the door with the spindle in position.
- Using the fixing bolts screw everything together through the top and bottom holes of the backplate. Before final tightening make sure that the lock is vertical, and test the mechanism to ensure that it is all moving easily. **DO NOT CLOSE THE DOOR UNTIL YOU ARE SURE THAT THE CODE WORKS.** **DO NOT** over-tighten the fixing bolts as this may cause distortion and lead to poor operation.

PUSHbutton

INSTALLATION INSTRUCTIONS

Mortice Latchset & Key Override Versions

Freephone Helpline:
800-355-0157

CA Technology Inc.
www.ca-tec.com