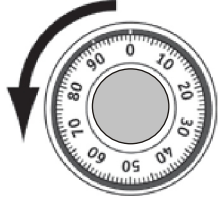
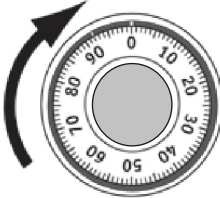


INSTRUCTIONS:

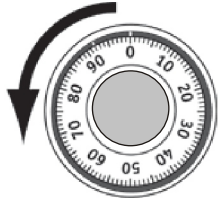


Start by turning the dial to the left (counter clockwise) at least 4 times or more to clear the lock. (It does not matter where you start).

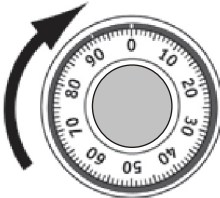
Keep going and stop on your first number
Looking at the 12 O'clock (center) index mark.



Now turn the dial to the right (clockwise) passing your second number twice and stopping on the third time.



Now turn the dial to the left (counter clockwise) passing your third number once and stopping on the second time.



Now turn the dial to the right (clockwise) until the dial comes to a complete stop. Use a slight pressure to make sure that the dial cannot turn anymore.
Now you can turn the handle to open the door.
If your safe is not equipped with a handle, then just pull on the dial to open door.

HELPFUL HINTS

- 1). Always use the 12 O'clock (center) index mark
- 2). You do NOT have to start at "0" or pay attention to the "0" at any time.
- 3). You must always start by turning the dial to the left (counter clockwise) at least 4 full turns and keep on going to the left to your first number.
- 4). After you dial your last number on the combination, you now must turn the dial to the right (clockwise) until it completely stops and cannot be turned anymore even if you use pressure.

IMPORTANT: AFTER LOCKING THE SAFE, YOU MUST TURN THE DIAL TO THE LEFT (a few turns) AND THEN TO THE RIGHT (a few turns) TO MAKE SURE IT IS COMPLETELY LOCKED.

NEVER: Lock your combination inside the safe.